

Fairchild Gold Nevada Titan

A Porphyry Copper System



State of Nevada, USA

January 5, 2026

Fairchild Gold Corp

TSXV: FAIR Börse Frankfurt: Y4Y

OTCQB: FCHDF



Disclaimer & Forward-Looking Statements

Disclaimer

Certain statements contained herein, as well as oral statements that may be made by Richard Redfern QP may constitute “forward-looking statements.” Any reference to a “Historical Resource” contained herein is considered historical in nature and as such is based on prior data and reports prepared by previous property owners. Some of the rock chip and drillhole sample assays presented herein are from historical data that may pre-date NI 43-101. Most of the assays were performed by professional, ISO-certified assaying companies. The historical works mostly were conducted under the supervision of a person who is/was a Qualified Person. All post 2012 rock chip geochemical analyses were performed by certified assay labs. As such, the historical sampling, assaying and QA/QC protocols are not known, and therefore these results must also be seen and interpreted in an historical context. These data are presented here for historical information purposes only. These data have been studied and verified and felt to be appropriate at this early stage of this exploration project by Richard R. Redfern, MSc. and QP, who has written NI 43-101 technical reports on mineral properties.

The contents of this presentation, including the historical information contained herein, are for informational purposes only and do not constitute an offer to sell or a solicitation to purchase any securities referred to herein.

Forward looking statements

This presentation includes certain forward-looking statements about future events and/or financial results which are forward looking in nature and subject to risks and uncertainties. Forward-looking statements include without limitation, statements regarding the company’s plans, goals or objectives and future completion of mine feasibility studies, mine development programs, capital and operating costs, production, potential mineralization and reserves, exploration results and future planning and objectives of Fairchild. Forward-looking statements can generally be identified by forward-looking terminology such as “may,” “will,” “expect,” “intend,” “estimate,” “anticipate,” “believe,” or “continues” or the negative thereof or variations thereon or similar terminology. There can be no assurance that such statements will prove to be accurate and actual results and future events could differ materially from those anticipated in such statements. Important factors that could cause actual results to differ materially from expectations include risks associated with mining generally and pre-development stage projects in particular including but not limited to changes in general economic conditions, litigation, legislative, environmental and other judicial, regulatory, technological and operational difficulties, labor relations matters, foreign exchange costs & rates.

The Titan

“We have a high degree of conviction that a porphyry intrusive is the force behind the metal rich deposits exploited by the old miners from the 19th and 20th centuries.”

“Our goal is to utilize modern methods expanding on successful localized surface sampling campaigns conducted over the last 20 years.”

“We are working towards revealing the true scale of the Titan.” Fairchild
Exploration Team 2025

Fairchild Gold

Fairchild Gold Corp. is a public company engaged in the business of mineral exploration and the acquisition of copper and gold assets in mining-friendly jurisdictions across North America. The company is committed to identifying and developing high-quality resource properties in Nevada with strong geological potential. Its strategy focuses on creating long-term shareholder value through disciplined exploration, strategic partnerships, and responsible development practices.

Nikolas Perrault 2025

Nevada: Host to Many Rich Mineral Deposits

Walker Lane and Carlin Mineral Belts
60 Moz Au and approximately 221 Moz Ag*
1835–2022 production exceeds 210 million oz Au,
valued at over \$300 billion. *Grok 3.0*

Carlin Queen Property (Carlin Trend)

Golden Arrow Property (Walker Lane Trend)

Nevada Titan Property



*Gold ~60 million oz Aggregated from Carlin Trend, Nevada Gold Mines, Cortez; 2024 industry reports
Silver ~221 million oz Byproduct-heavy; Rochester, Hycroft; 2024 disclosures

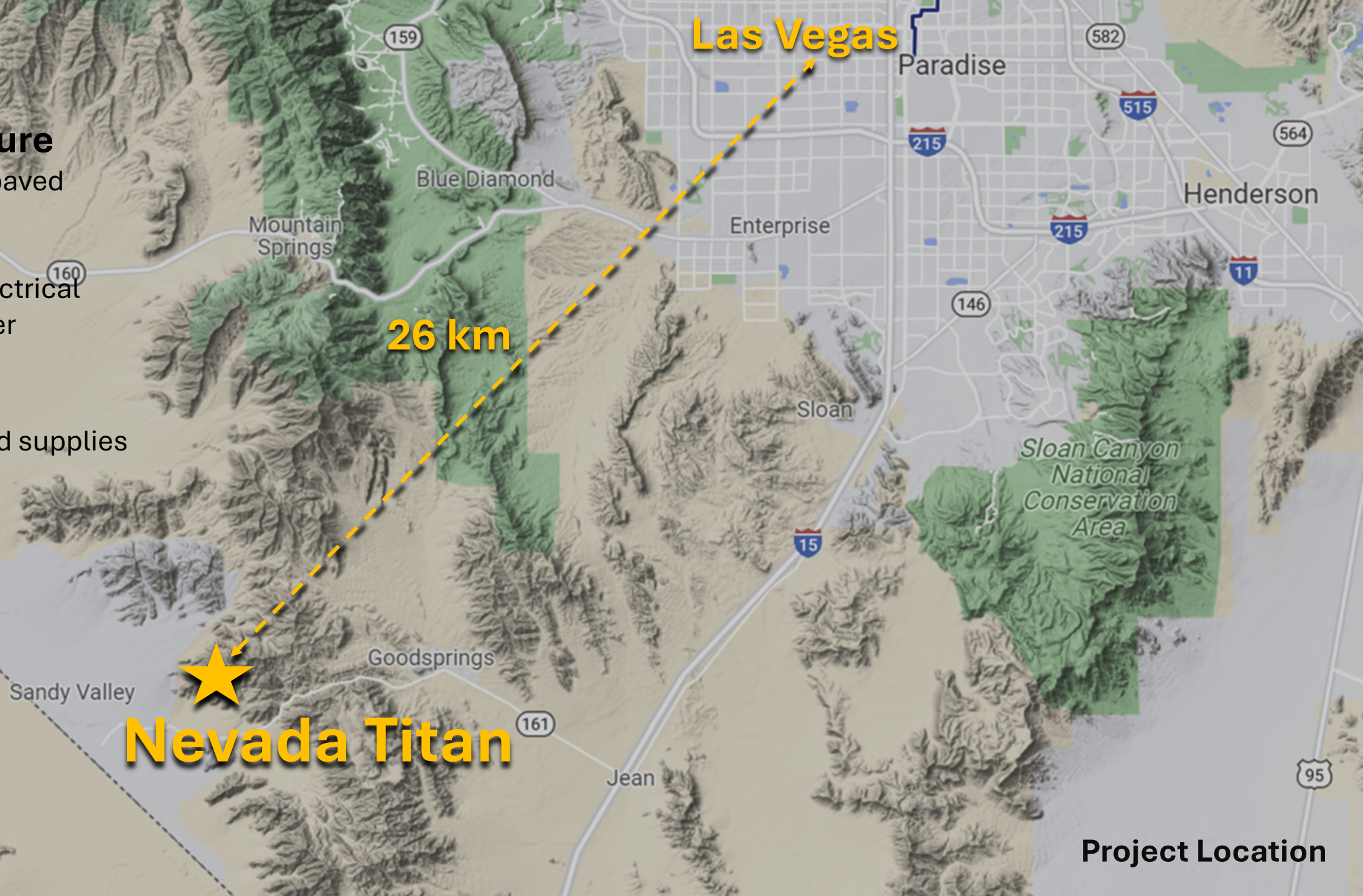
Infrastructure

Accessible by paved roads

Proximity to electrical power and water

Equipment

Contractors and supplies are available in Las Vegas and Reno.



Las Vegas

Paradise

582

515

564

Henderson

215

215

11

146

Sloan Canyon
National
Conservation
Area

15

Sloan

26 km

Goodsprings

161

Jean

Sandy Valley

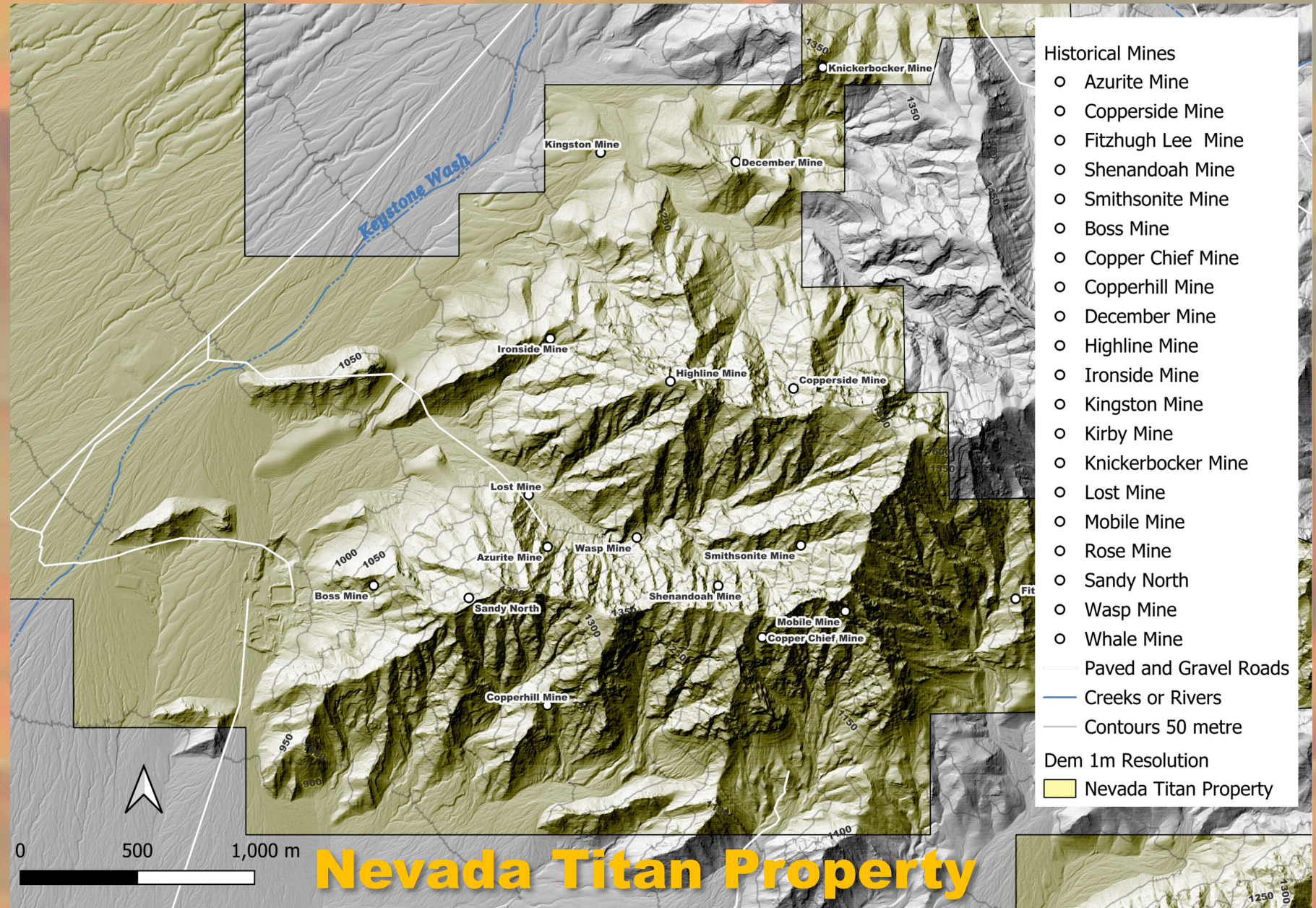
Nevada Titan

Project Location

Historical Mining

From 1893 to 1957, the district produced approximately \$25 million in minerals (equivalent to over \$250 million today), dominated by zinc and lead but with significant byproducts. A post-World War I crash in 1919 caused a downturn, followed by brief intervals in 1921 and 1929. By the late 1940s, most operations ceased due to World War II. The last major activity ended around 1957, leaving behind ghost town remnants like Goodsprings, which preserves Old West history through sites like the Pioneer Saloon. *Source: Grok 3.0*

Our work shows that the high-grade mineralization is still present and very rich in copper, silver, and other strategic metals.



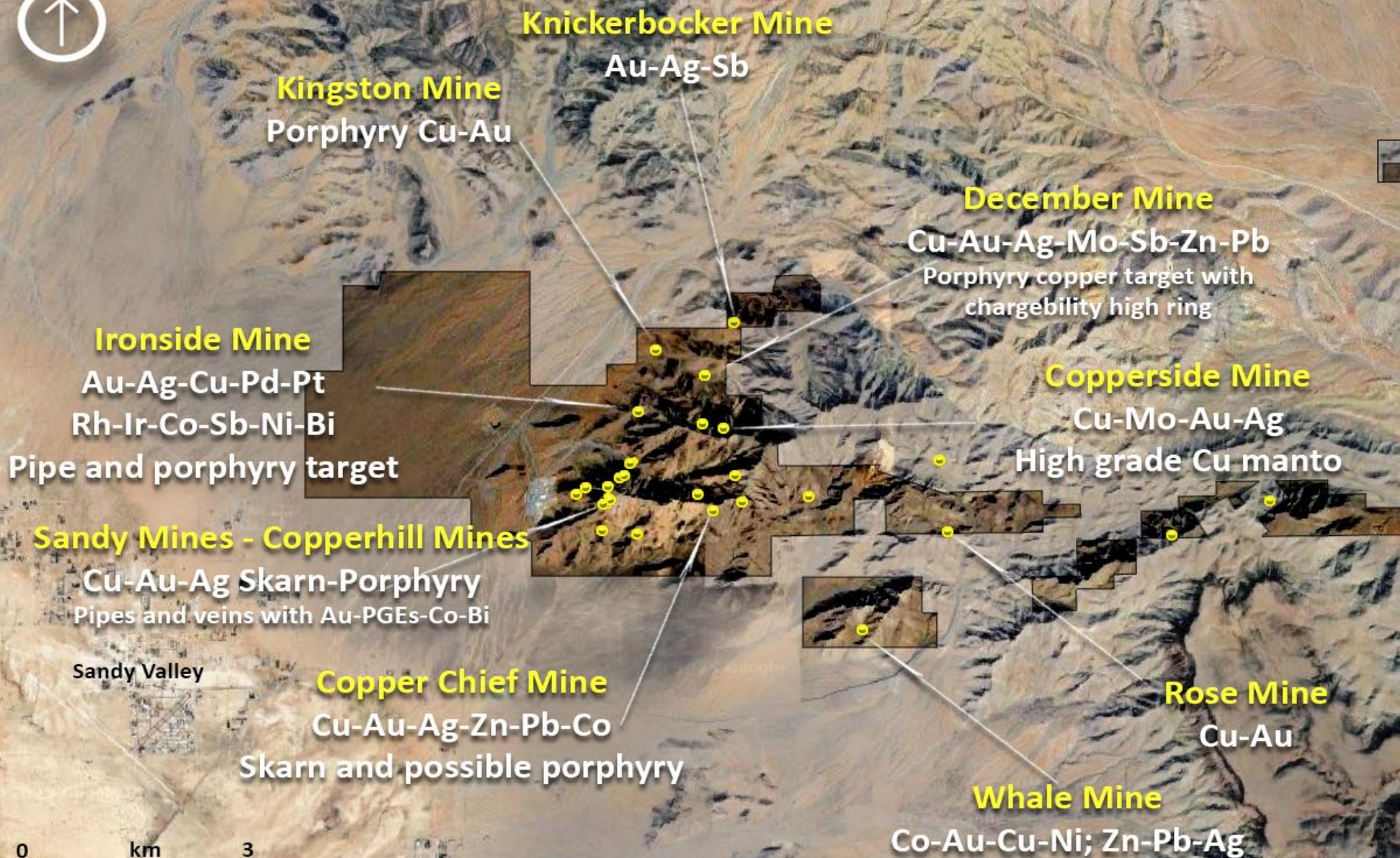


Historical Mines in Property Area

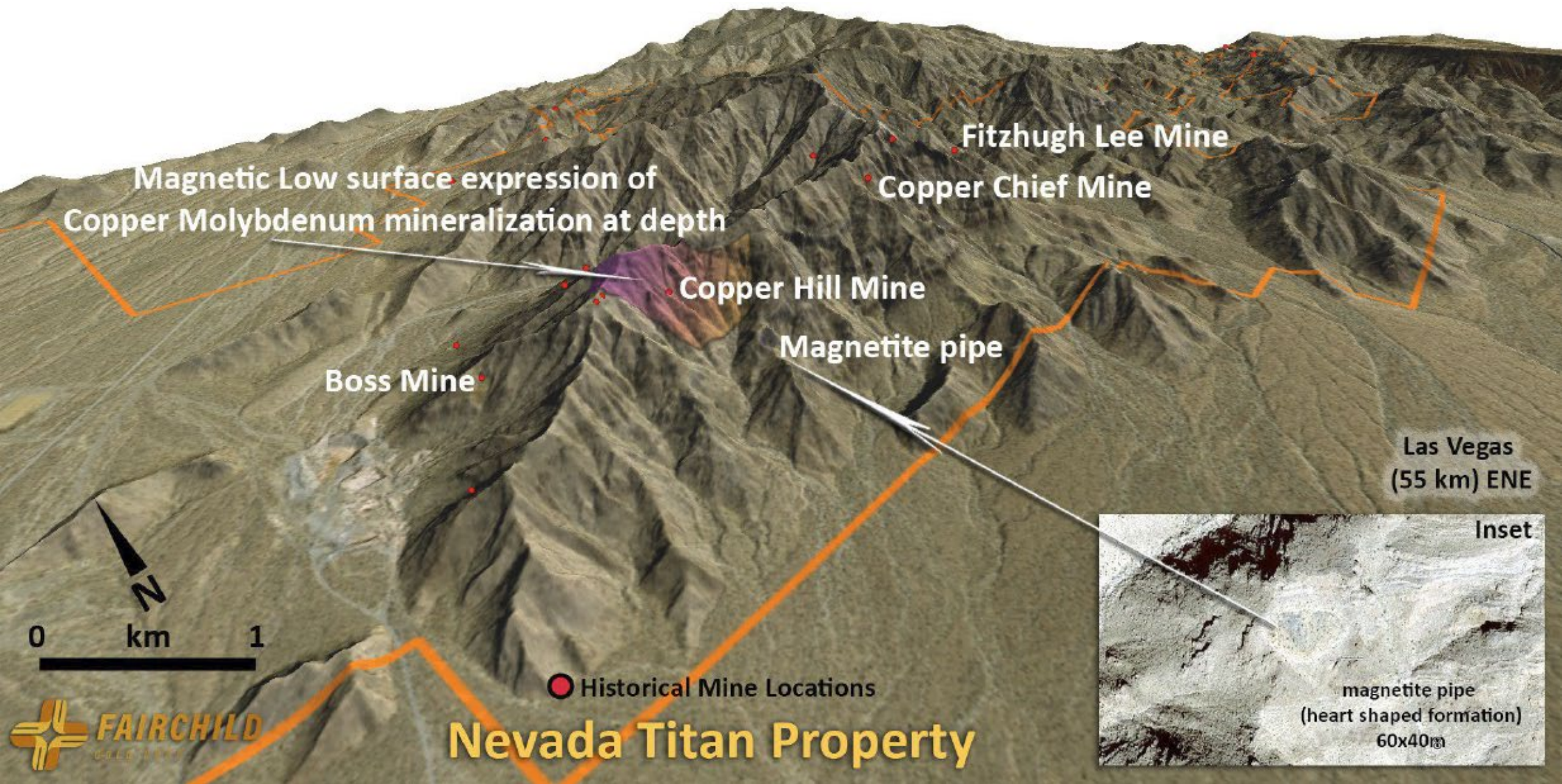
Legend

● old mine

■ property area



Primary Exploration Target: Copper Hill Mine Anomaly



Exploration

Focus:

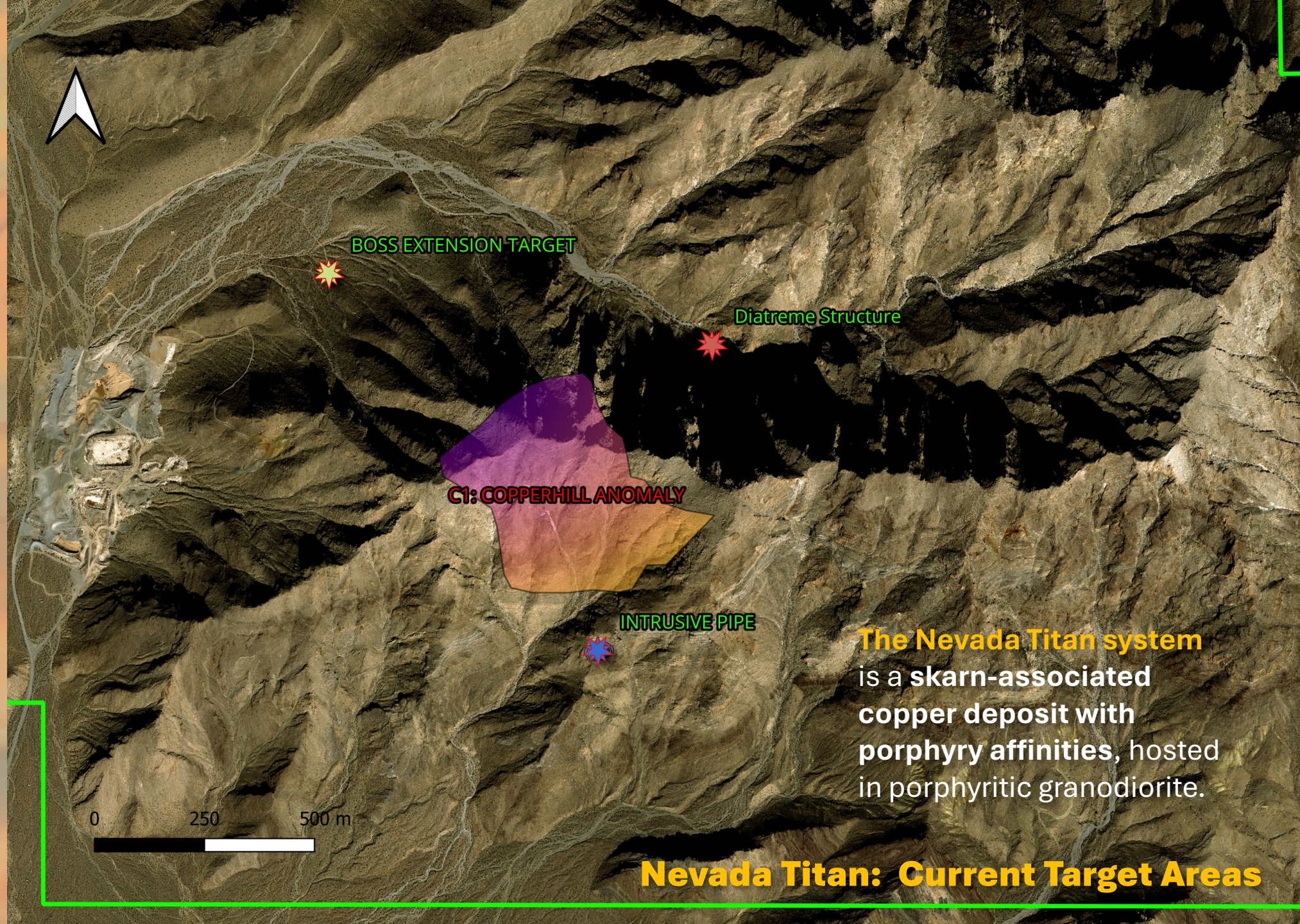
Evaluating high-grade copper-gold mineralization and identifying deeper targets.

Key Geological Features:

Intrusions: Granodiorite and diorite bodies intruding carbonate host rocks.

Structural Controls: NE-SW trending faults and shear zones localizing mineralization.

Alteration: Skarn-related amphiboles and Fe-oxides, dolomitization, silicification, and secondary Biotite K-feldspar alteration.



The Nevada Titan system is a skarn-associated copper deposit with porphyry affinities, hosted in porphyritic granodiorite.

Nevada Titan: Current Target Areas



Las Vegas
26 km NE

Cg2
Cambrian Goodsprings Dolomite

Smithsonite
Copperside

Fitzhugh Lee

Copper Chief

Wasp

Azurite

Shenandoah

Breccia Pipe

Copper Hill

Magnetic Anomaly Low
Expected Porphyry Target

Dsv
Devonian Sultan Limestone
Valentine member

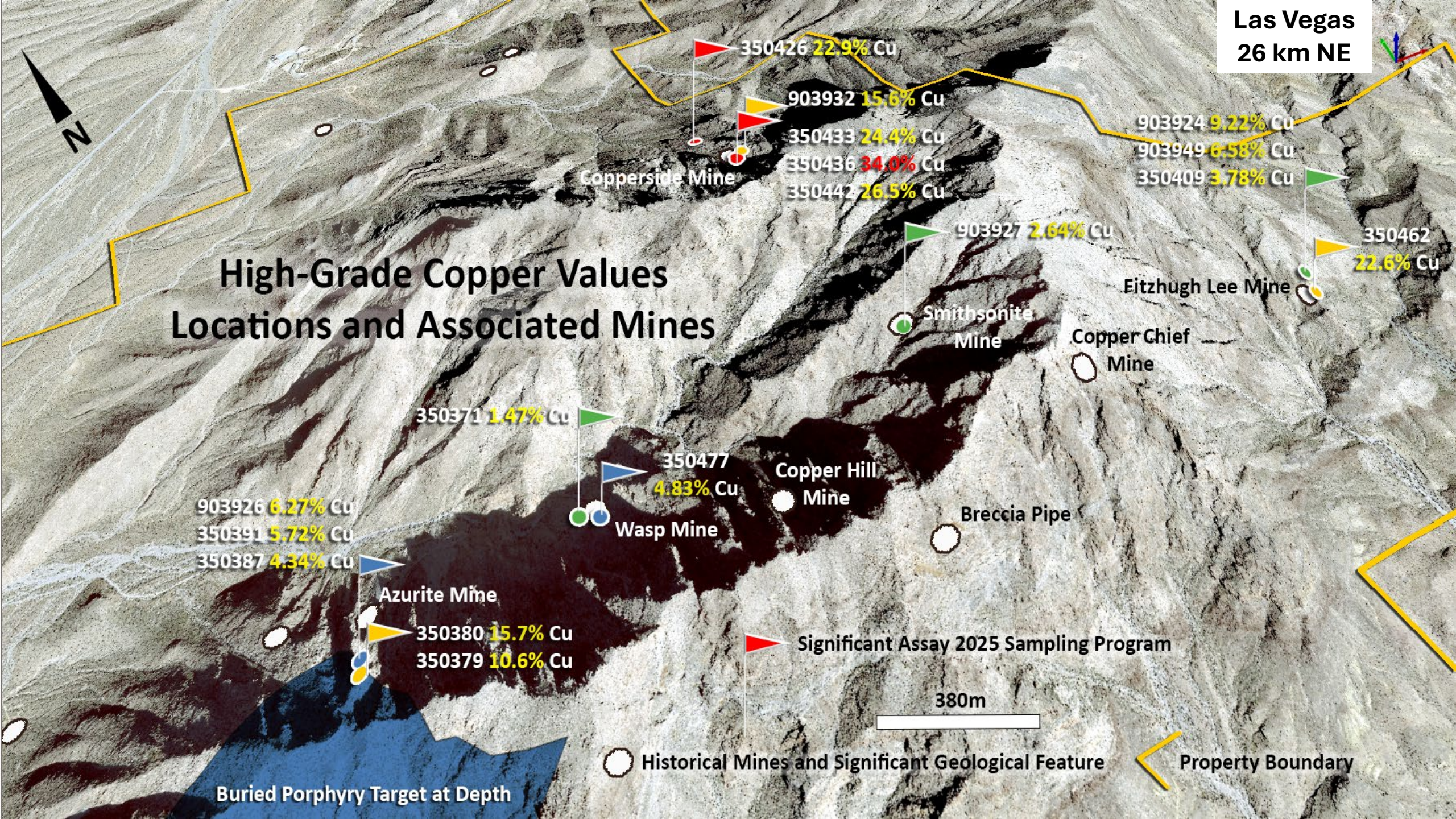
DCg4
Cambrian
Goodsprings Dolomite

2025 Sampling Program Locations

350m

Las Vegas
26 km NE

High-Grade Copper Values Locations and Associated Mines



2025 Highlights (outcrop samples)

Copperside Area/Mine

Sample	Cu %	Au (g/t)	Ag (g/t)	Mo (ppm)
350436	34.0	1.27	134.0	1,745
350442	26.5	0.45	2.55	853
350433	24.4	0.41	3.07	256
350426	22.9	0.28	17.45	52.3
903932	15.6	0.17	10.50	1300

Fitzhugh Lee Mine and Area

Sample	Cu %	Au (g/t)	Ag (g/t)	Mo (ppm)
350462	22.6	0.28	77.4	164
903924	9.22	0.29	226.0	559
903949	6.58	0.61	18.3	928
350409	3.78	0.06	20.2	28.8

Azurite Mine

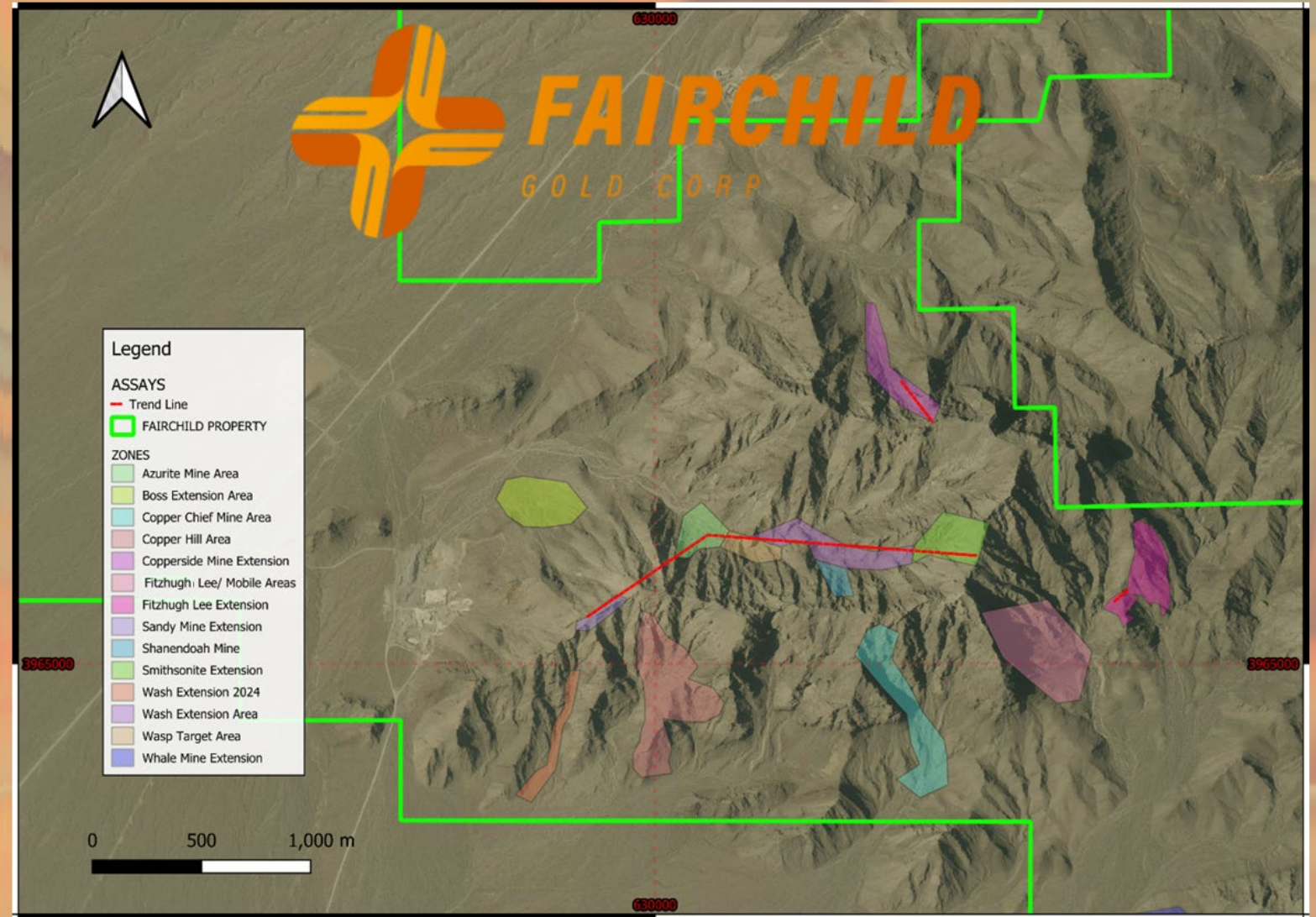
Sample	Cu %	Au (g/t)	Ag (g/t)	Mo (ppm)
350380	15.7	0.77	5.07	1,015
350379	10.6	0.22	9.54	2.74
903926	6.27	0.29	59.80	2.74
350391	5.72	1.33	17.95	17.9
350387	4.34	1.44	42.10	11.45

Other Samples

Sample	Area	Cu %	Au (g/t)	Ag (g/t)	Mo (ppm)
350477	Wasp Mine	4.83	0.24	97.0	44.2
903927	Smithsonite Area	2.64	0.32	154.0	12.6
350371	Wasp Mine	1.47	0.62	4.56	1,450

1.5 km Copper Corridor

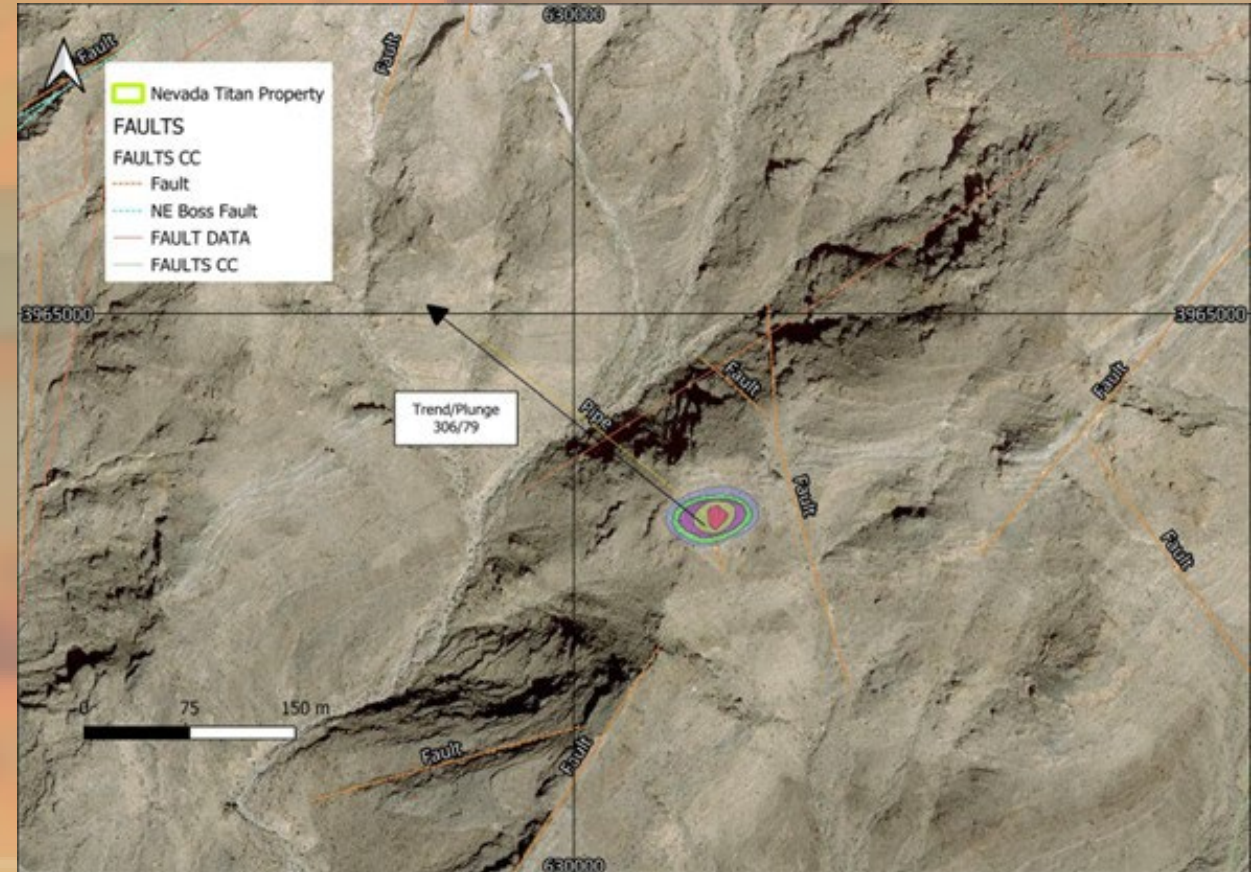
Copper assays define a persistent presence of mineralization across a 1.5 km corridor. High-grade pods are exposed in historic mine workings, with assays reaching up to **34.0% Cu**. Meanwhile, sampling in the Wash Zone returned anomalous values ranging from hundreds of parts per million to **several percent Cu**. This distribution demonstrates that copper mineralization extends beyond the mine exposures, occurring as pods and lenses rather than as a continuous zone.



Breccia Pipe Discovery – Significance and Porphyry Affinity

Geological mapping during the 2025 program has outlined a steeply dipping hydrothermal breccia pipe exposed on the surface in the central part of the property. The breccia is matrix-supported with angular carbonate clasts and fine-grained hydrothermal material, consistent with magmatic-hydrothermal breccias described in porphyry-related systems.

Breccia pipes are recognized as important vertical fluid pathways in porphyry-skarn systems, often marking the connection between intrusive sources at depth and high-grade mineralization near the surface. The presence of garnet-bearing skarn textures in the matrix, coupled with elevated molybdenum signatures in nearby samples, provides a strong porphyry affinity. Sampling of the breccia pipe has been completed, and assays are pending.



Breccia Pipe in High Resolution Real Colour Imaging

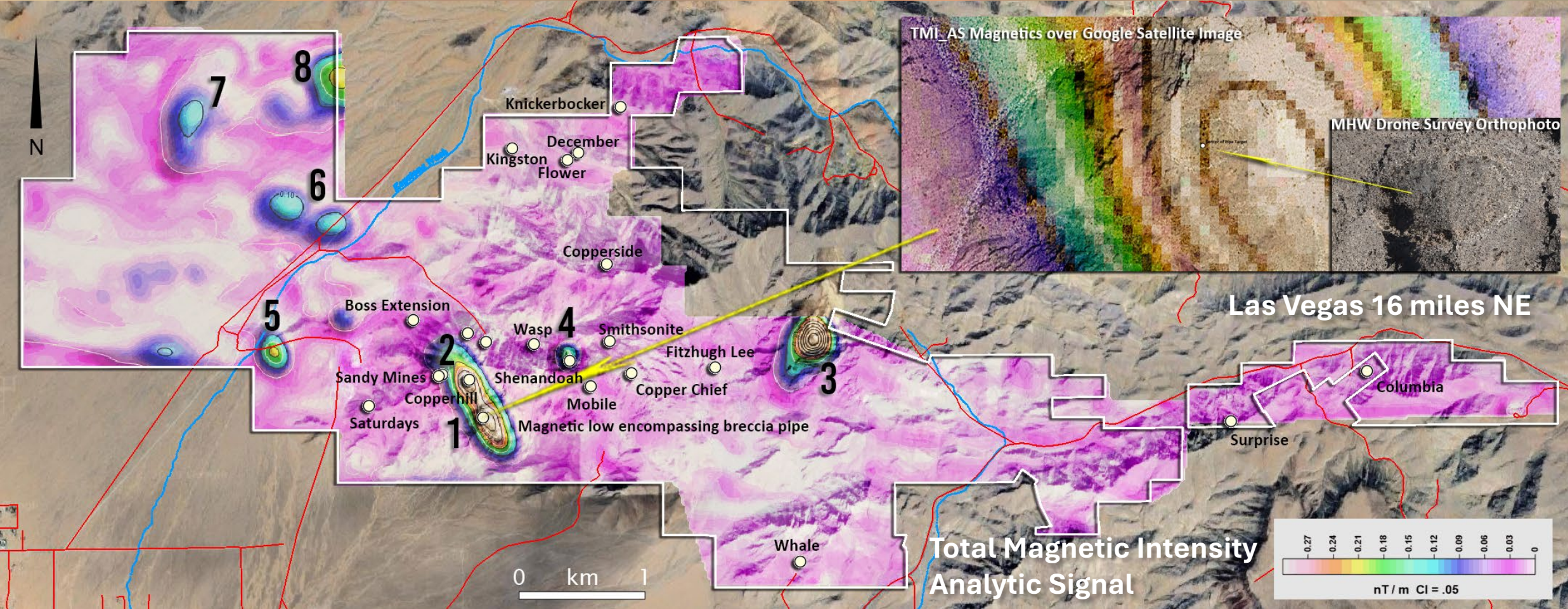
Drone colour imaging is a product from the magnetics survey highlighting the alteration outline from the pipe Emplacement chemical interaction.



Nevada Titan Project

A large porphyry copper system target underlying numerous historical mines rich in copper and strategic metals of antimony and cobalt. Our magnetics survey has greatly increased the number of prospective targets for further investigation. The drone magnetics survey was completed November 2025. The data was independently interpreted by consulting geophysicist resulting in the new discoveries.

Eight anomalous magnetic signatures were discovered from the Drone Magnetics Survey



Exploration Plan

Step 1

Structural Mapping & DEM Integration (Late 2025-2026 Program):

Use 2 cm DEM + orthophotos (from drone survey) as the mapping base.

Step 2

Geochemistry & Portable XRF (2025–2026)

Whole-rock geochemistry, thin section petrography, completed assays.

Portable XRF campaign during 2026 mapping for real-time Cu–Pb–Zn–Co analysis.

Step 3

Drone Magnetics Completed November 2025

Full-property high-resolution magnetic survey.

Products: 3D inversion models, 2 cm DEM, and orthophotos.

Step 4

Induced Polarization (Q1 2026):

Targeted over Copper Hill anomaly and selected magnetic anomalies.

Step 5

AI Integration (Start ~2025-2026)

Inputs: structural, geochemical, magnetics, IP, lithology.

AI system vectors porphyry–skarn–CRD targets and integrates multi-dataset analysis.

Step 6

Drill Target Finalization (Late Q2 2026)

Phase I program: To be discussed by team

Focus: **Copper Hill anomaly (priority).**

Summary

The **Nevada Titan Property** has excellent potential to contain multiple large economically significant mineral deposits.

These defined targets includes multiple **copper-gold porphyries** as well as four other styles of mineralization.

The project portfolio is unique given the underexplored nature of the ground and its proximity to the world-class infrastructure, highly skilled labor force, suppliers and geological service providers, which comes from being just 55 km, only 1 hour drive from Las Vegas and accessible via paved roads.

The **Copper Hill Anomaly** target is new and untested. **Boxxer Gold** missed the the copper-gold mineralized bodies in their initial drilling campaign.

Fairchild Gold Corp. plans to fast-track its exploration activities at the property over the coming months.

Thank you for your time and consideration, for
more information, please refer to the company
website at:



FAIRCHILD
GOLD CORP

1 (866) 497-0284

Info@fairchildgold.com

www.fairchildgold.com

